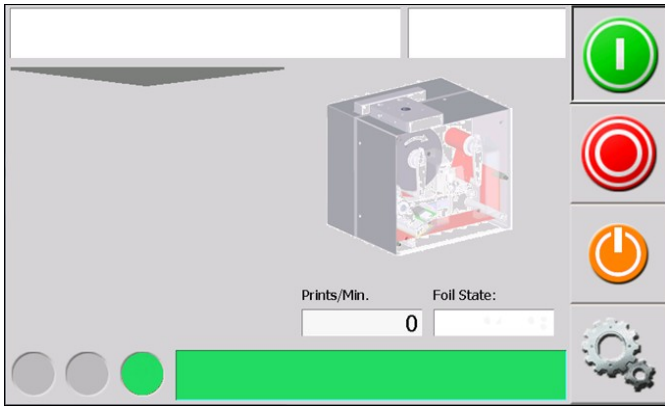


IQ Screen Calibration Instructions (Draft Version)



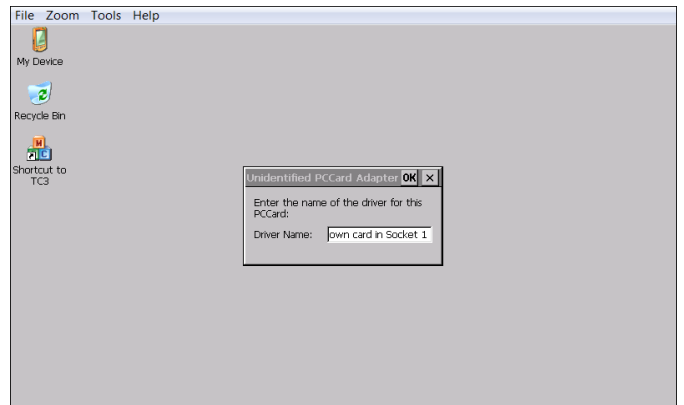
1. Editor screen on start up



2. Plug USB keyboard into IQ USB socket.



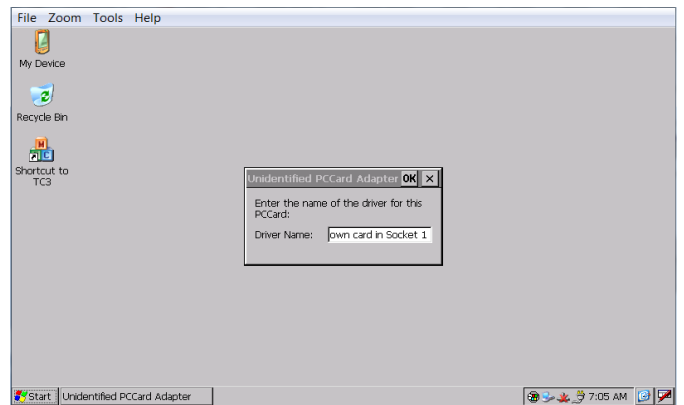
3. Press **Esc** key



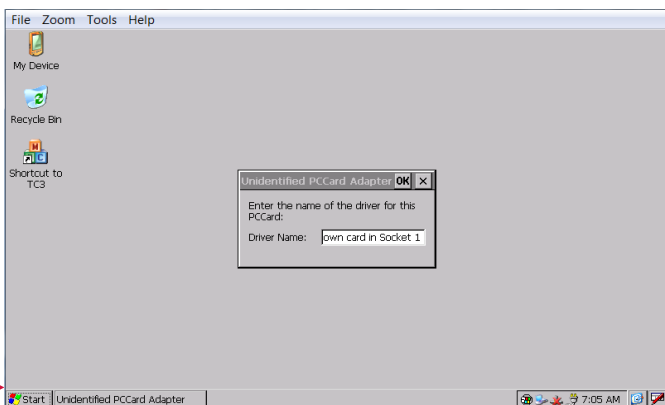
4. The following screen is displayed.



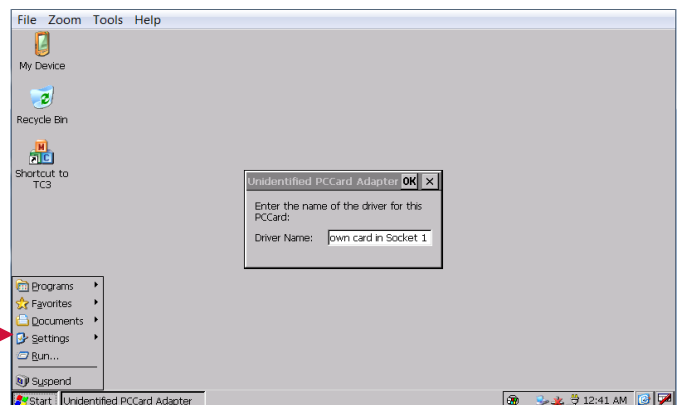
5. Press **Windows** key



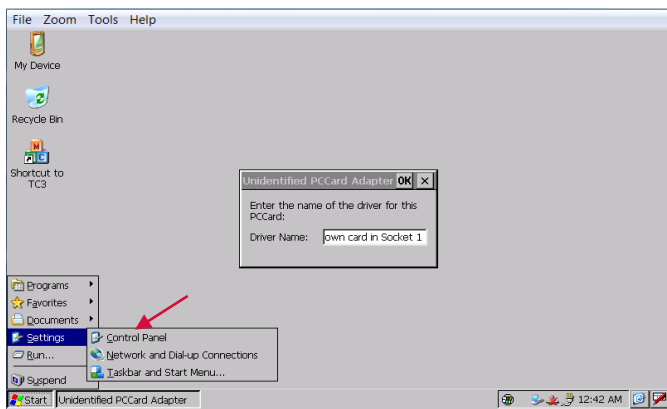
6. The following screen is displayed.



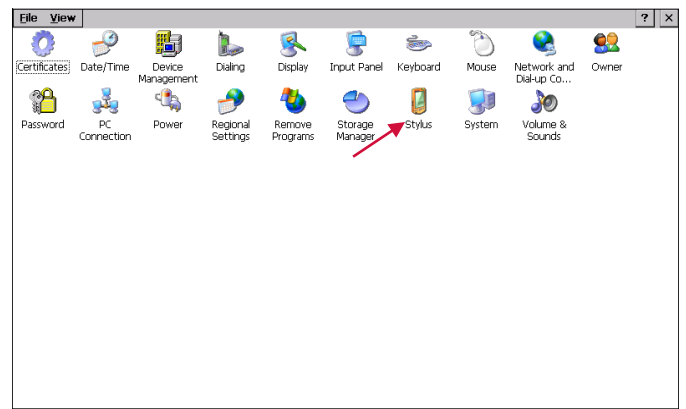
6. Tap **Start**.



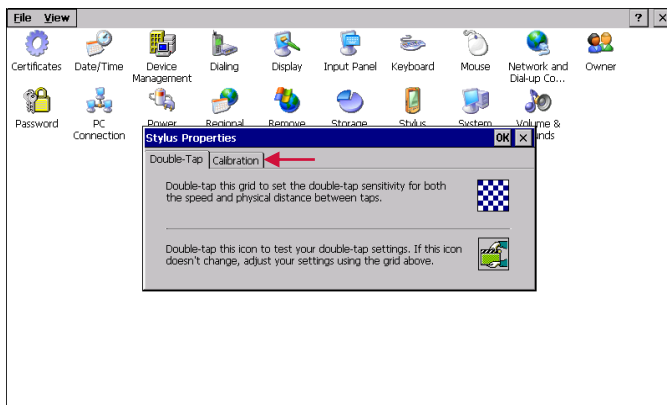
8. Tap **Settings**



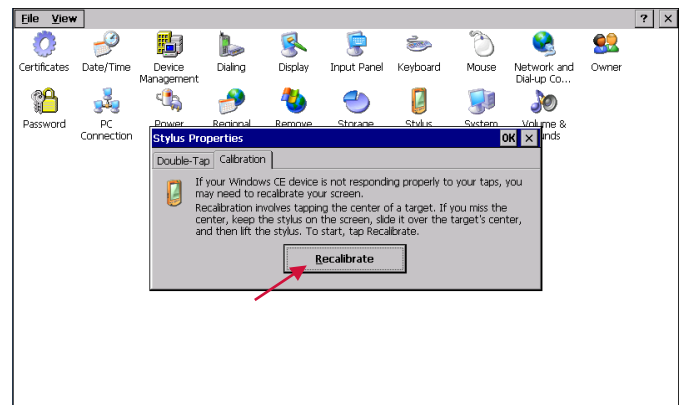
9. Tap Control Panel



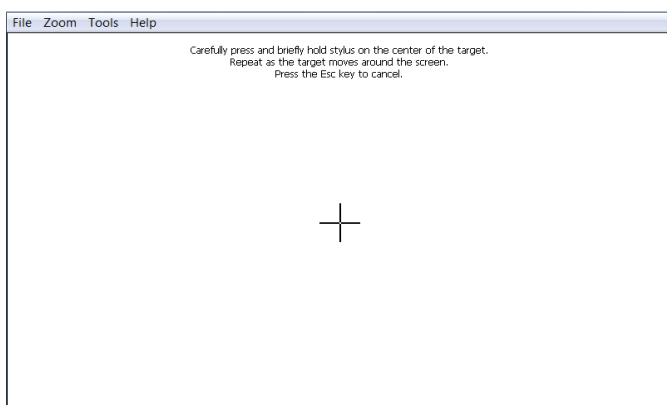
10. Double tap Stylus



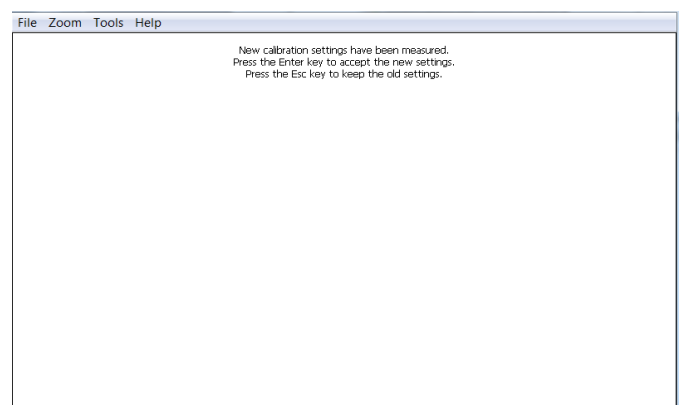
11. Tap Calibration



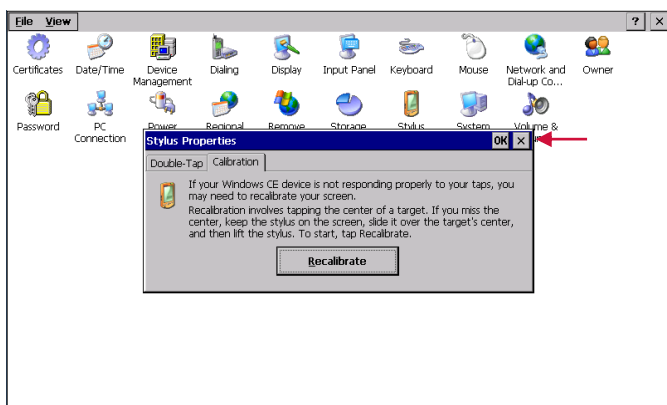
12. Tap Recalibrate



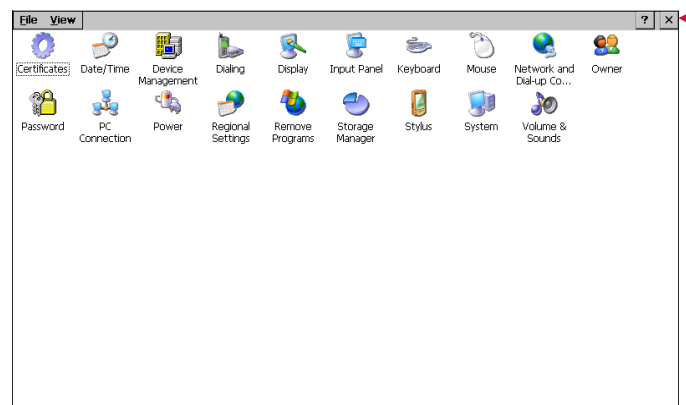
13. Follow on screen instructions



14. Press Enter on USB keyboard to save settings



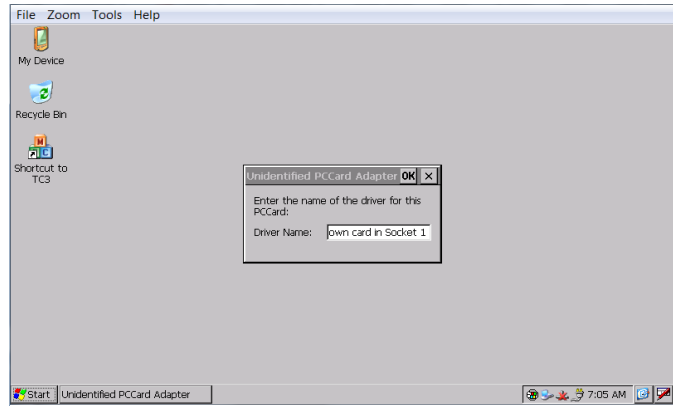
15. Tap X on Stylus Properties window to close



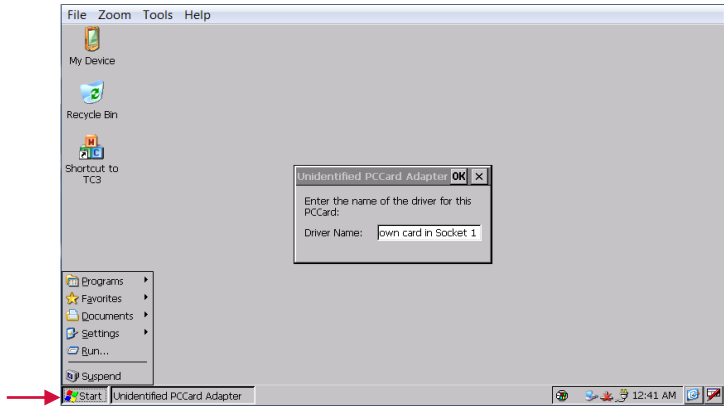
16. Tap X to close Control Panel window



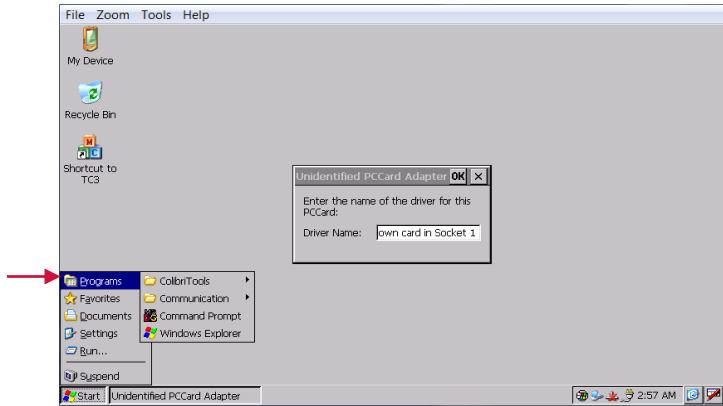
17. Press **Windows** key.



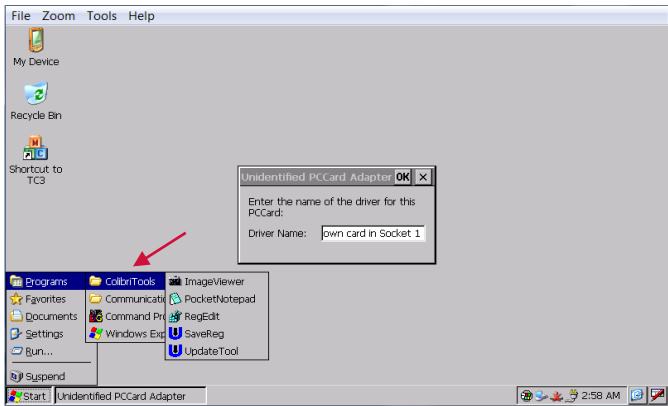
18. The following screen is displayed



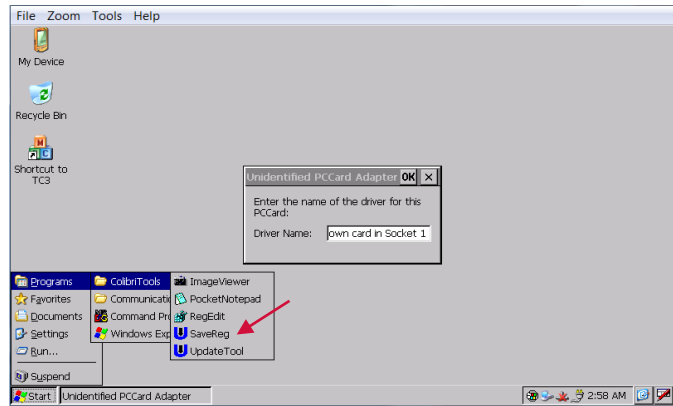
19. Tap **Start**



20. Tap **Programs**



21. Tap **Colibri Tools**



22. Tap **Save Reg**

23. Turn off power supply

24. Turn on Power Supply